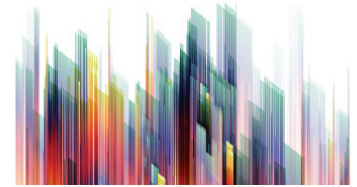


ValveBOX

ADPT-VALVE-INTERFACE-1

Valve Control Box

www.SyringePump.com



NewEra
pump systems

The Valve Control Box controls a single 12V DC valve dependent on the pumping direction.

Packing List:

Power Supply: 12V DC @ 1000 mA	1x (Fig.1)
Modular cable: RJ-11 6P4C, 7'	1x (Fig.2)
TTL Pump Adapter: DB9 to RJ-11 adapter	1x (Fig.3)
Valve Control Interface Box for one valve	1x (Fig.4)

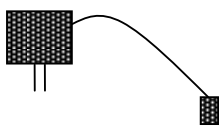


Figure 1: Power Supply



Figure 2: Adapter Cable, 7'

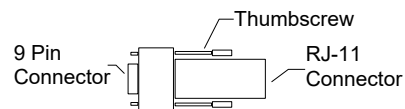
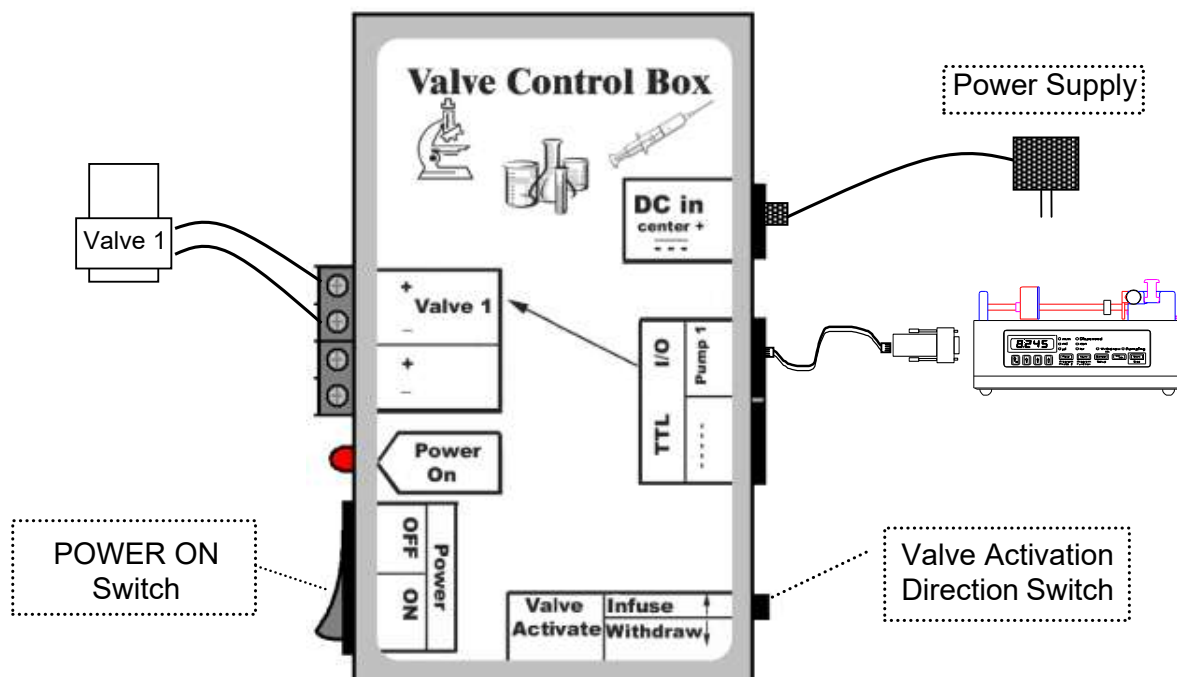


Figure 3: TTL Pump Adapter

Figure 4: Valve Control Box



System Setup:

1) Turn the power off:

- a) On the Valve Control Box, turn the power switch to the "OFF" / "1" position.

2) Connect a control valve:

- a) Using a small screwdriver, attach one wire to the connector labeled **Valve 1(+)** and the second wire to the connector labeled **Valve 1(--)**
 - **NOTE:** Most valves do not have polarity, therefore wires can be connected to either connector. If your valve requires polarity, connect according to (+) and (-) polarity.

3) Connect a pump:

- a) Attach the 9-pin adapter to the 9-pin connector labeled "TTL I/O" on the back of the pump.
- b) Attach the modular (*telephone style*) cable to the 9-pin adapter.
- c) Attach the other end of the modular cable to the Valve Control Box "TTL I/O" connector labeled "Pump 1".

4) Attach the power supply:

- a) Attach the power supply to the **DC IN** connector then plug the power supply into an outlet.

5) Turn the power on:

- a) Turn on the power to the pump and the Valve Control Box by turning the Power switch to the "ON" / "1" position.

Operation:

A Valve Control Box will activate a valve when the pump is either infusing or withdrawing, dependent on the setting of the **Valve Activation Direction Switch (VADS)**. The valve should be set to "**Active**" during the shorter operation cycle, either infusing or withdrawing.

Configure the VADS to determine when the valve activates. Be sure to set up the tubing accordingly.

After powering on the pump, turn the power switch on the Valve Control Box to the "ON" / "1" position. If the power is on, the Power On LED will be lit.

Valve Control Box Specifications:

Power Supply Type: Regulated external wall adapter
Connector: 2.1 mm barrel, center positive

Power Supply Output Rating: 12V DC @ 1000 mA

